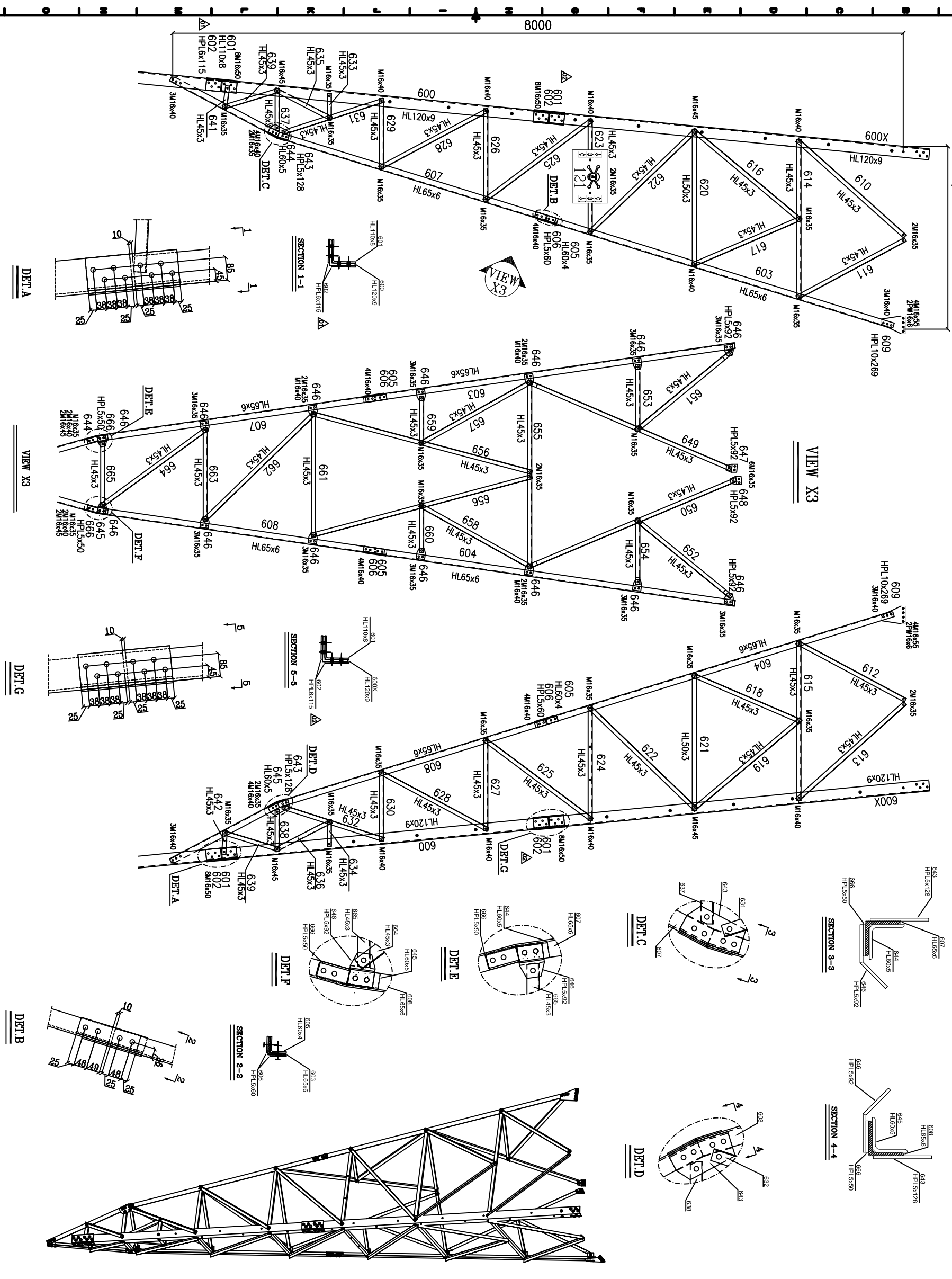


B/B OF ANGLE 2012

LEG EXT.8m TRANS & LONG FACE



NOTES:

- 1- ALL DIMENSION ARE IN MILLIMETERS.
- 2- DO NOT SCALE THE DRAWING
- 3- DIAMETERS OF HOLE ARE AS FOLLOWS:  
Ø125 mm FOR M20, Ø175 mm FOR M16  
Ø135 mm FOR M12 BOLTS.
- 4- EACH BOLT ASSEMBLY INCLUDES ONE BOLT  
ONE NUT AND ONE SPRING WASHER.
- 5- EACH STEP BOLT ASSEMBLY INCLUDES ONE STEP BOLT  
TWO NUTS AND TWO SPRING WASHER.
- 6- GRADE OF BOLTS IS 5.8
- 7- THE STEEL MEMBER IDENTIFIED BY "T" ARE ST52  
OTHER MEMBERS ARE ST37

SYMBOLS AND ABBREVIATIONS

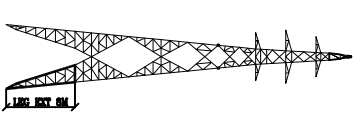
DESCRIPTION	SYMBOL
CENTER LINE	C.L.
PLATE	PL
ANGLE	L
SPLICE	SP
HIGH TENSILE	HL
BEND LINE	B.L.
NEAR SIDE	N.S.
EAR SIDE	F.S.
Ø12 mm HOLE	◆
Ø13 mm HOLE	●
Ø17.5 mm HOLE	○
Ø20 mm HOLE	○
Ø22mm HOLE	○
HOLE FOR STEP BOLT	●

SPECIFICATION FORMATERIALS

NO.	ITEM	REFERENCE
1	ANGLE	DN 10006-3
2	CHUBST	DN 10040
3	PLATE	DN 10040
4	PLATE	DN 10040
5	NUT	DN 4005
6	WASHER	DN 187
7	PLATE	DN 10006-3
8	WASHER	DN 187
9	WASHER	DN 187
10	WASHER	DN 187
11	WASHER	DN 187
12	WASHER	DN 187
13	WASHER	DN 187
14	WASHER	DN 187
15	WASHER	DN 187
16	WASHER	DN 187
17	WASHER	DN 187

LIST OF BOLT & NUTS & WASHERS INCLUDING 3% EXTRA

LENGTH	QTY.	LENGTH	QTY.
M16x50mm	75	STUPE WASHER	214
M16x50mm	54	6mm PICK W.	5
M16x50mm	9		
M16x50mm	33		
M16x50mm	9		
STP BOLT	17		



YASAN CO. SA 30  
63KV D/C TRANSMISSION LINE  
MONENGO IRAN CO.  
YASAN CO.  
HEAVY SUSPENSION YTM15  
LEG EXT. 8M  
YASAN CO.  
1307/7/15